

# G9-2T HD Stainless

Height: 28.0" Width: 8.3" Depth: 18.4"  
(71.1cm) (21.1cm) (46.7cm)



- Four year warranty on grinding burrs
- Portion controlled for the right amount of coffee every time
- Precision burrs for consistent, commercial quality grind
- Two hoppers each hold 6lb (2.72kg) of regular, decaf or specialty coffee beans

Agency:



## Specifications

**Product #:** 24250.0021

**Hopper Capacity:** 6.00 lbs (2.722 kgs)

**Interface:** Cabled

**Finish:** Stainless

**Hoppers:** Two

## Additional Features

## Electrical & Capacity

| Volts* | Amps | Watts | Cord Attached | Plug Type  | 8oz cups/hr<br>236ml cups/hr | Input H <sub>2</sub> O Temp. | Phase | # Wires plus Ground | Hertz |
|--------|------|-------|---------------|------------|------------------------------|------------------------------|-------|---------------------|-------|
| 120    | 9.4  | 1128  | Yes           | NEMA 5-15P | -                            | 60°F (15.5°C)                | 1     | 2                   | 60    |

\*When a BUNN is machine rated 120/208-240V, 120/208V or 120/240V, the higher voltage is the supply voltage needed to power the machine. The 120V is there to supply power to some components rated 120V in the machine, but it is not the supply voltage and would not power the machine if the machine is marked with the before mentioned ratings.

## Plumbing Requirements

| PSI | kPa | Fitting Supplied | Water Flow Required (GPM) |
|-----|-----|------------------|---------------------------|
| -   | -   | -                | -                         |

**WARNING:**

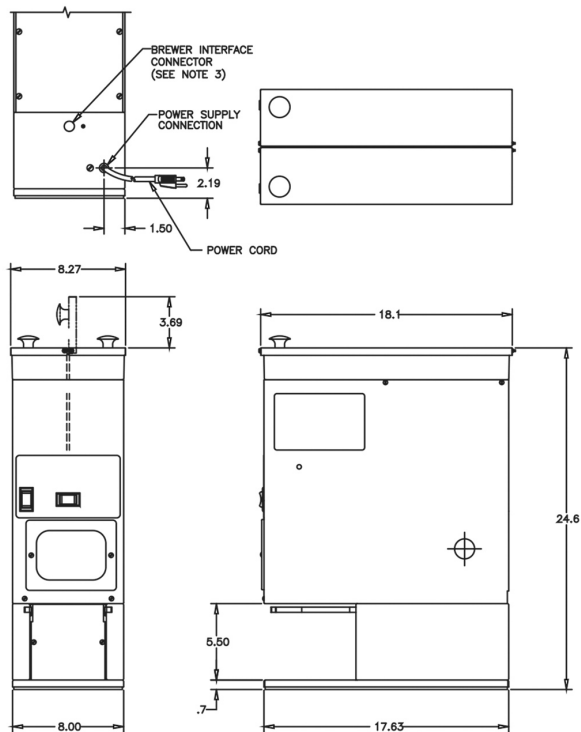
## CAD Drawings

| 2D | Revit | KLC |
|----|-------|-----|
| ●  |       |     |

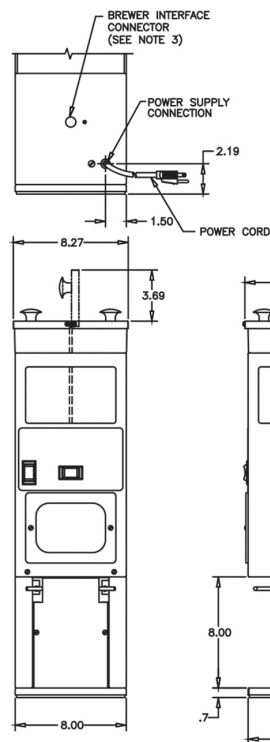


BUNN® reserves the right to change specifications and product design without notice. Such revisions do not entitle the buyer to corresponding changes, improvements, additions or replacements for previously purchased equipment. For most current specifications and other info visit [bunn.com](http://bunn.com).

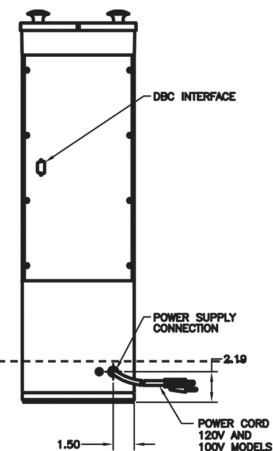
**Last Updated:**  
07/09/2021



G9-2 HD



G9-2T DBC Panel



G9-2T HD

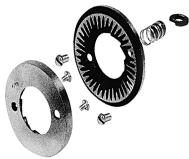
| Unit    |          |         |          | Shipping |          |          |            |                       |
|---------|----------|---------|----------|----------|----------|----------|------------|-----------------------|
|         | Height   | Width   | Depth    | Height   | Width    | Depth    | Weight     | Volume                |
| English | 28.0 in. | 8.3 in. | 18.4 in. | 35.5 in. | 13.4 in. | 23.4 in. | 67.000 lbs | 6.423 ft <sup>3</sup> |
| Metric  | 71.1 cm  | 21.1 cm | 46.7 cm  | 90.2 cm  | 34.0 cm  | 59.4 cm  | 30.391 kgs | 0.182 m <sup>3</sup>  |



BUNN® reserves the right to change specifications and product design without notice. Such revisions do not entitle the buyer to corresponding changes, improvements, additions or replacements for previously purchased equipment. For most current specifications and other info visit [bunn.com](http://bunn.com).

Last Updated:  
07/09/2021

Related Products & Accessories:G9-2T HD Stainless(24250.0021)



BURR SET KIT, NEW

Product #: 05861.1002

DECHAFFER PLATE,  
SPRING STEEL

Product #: 05995.0000



BURR SET KIT, TURKISH  
GRIND

Product #: 11285.1000

BOWL ASSY, COFFEE  
BLACK

Product #: 48520.0000



## Serving & Holding Options: G9-2T HD Stainless(24250.0021)

\*Serving and Holding selections are currently unavailable. Please contact your sales representative to find out more information.\*



BUNN® reserves the right to change specifications and product design without notice. Such revisions do not entitle the buyer to corresponding changes, improvements, additions or replacements for previously purchased equipment. For most current specifications and other info visit [bunn.com](http://bunn.com).

Last Updated:  
07/09/2021